

Brewly Malt Crusher 2 Malt Mill

For perfectly milled grains, ease of use and superior dependability, look no further than Brewly Malt Crusher 2 - A 2-roller grain mill with metal base. The Malt Crusher 2 achieves the ideal crush for your brewery. It features a fully adjustable roller gap from 0.6mm (0.025") all the way to 2.5mm (0.1"), allowing you to finely tune your crush to your exact preference. Features include SS304 stainless steel rollers, sealed bearings, a 3.5kg (7lb) capacity grain hopper, an ergonomic crank handle, and unlike other available grain mills, this Malt Crusher 2 comes complete with a sturdy metal base that fits perfectly on bottling/fermenting buckets. Use either the hand-crank or a power drill with low-RPM and 3/8" chuck.

INVENTORY

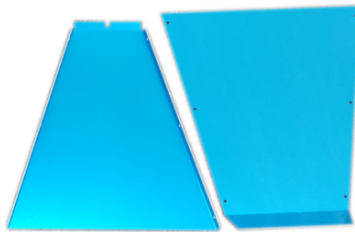
Tools Needed: Adjustable Wrench, Phillips Screwdriver.



2-Roller Mill Body



Grain Hopper Locknuts & Bolts (x12)



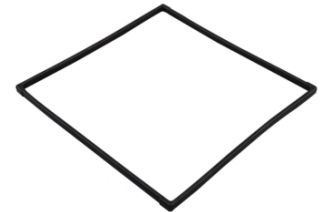
Grain Hopper (4 Pieces)



Metal Base



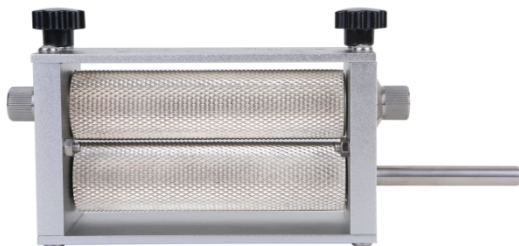
Crank Handle



Silicone Rim

SETTING THE ROLLER GAP & USAGE

This malt mill has an adjustable roller to set the proper gap for milling various types of malt.



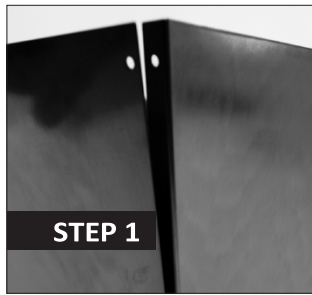
To set the gap, loosen the black screw(s) that secure the non-driven roller on the back of the mill.



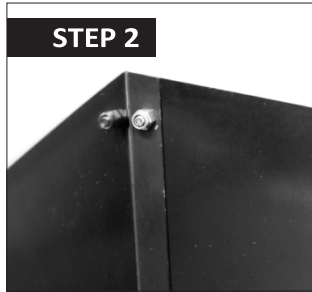
On the sides of the mill, turn the knurled knobs clockwise to narrow or counterclockwise widen to the roller gap. The range is from 0.025" (0.6mm) to 0.1" (2.5mm). We recommend the 0.045" (1.1mm) setting to begin with.

Once the rollers are set to your liking, re-tighten the black screw to secure the roller.

ASSEMBLY



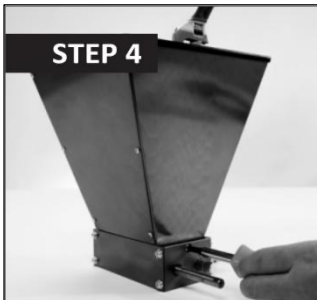
Step 1: Using the 12 provided sets of small nuts and bolts, assemble the Grain Hopper. Be sure that the larger front and back plates of the hopper are on the outside, so the flanged side plates are in the inside.



Step 2: Install small bolts from the outside, and hand thread the nuts on the inside. Tighten with a screwdriver and small wrench.



Step 3: Slide the Silicone Rim over the top of the hopper walls to attach. (It is slightly rectangular and will only fit in one orientation)



Step 4: Loosen the nuts and bolts above the rollers main mill body, and insert the hopper making sure the slots in the hopper fit around the bolts. Tighten bolts with a screwdriver and wrench.



Step 5: Flip the entire assembly upside down to install the Metal Base, making sure the bent tabs of the base are facing up, and the smaller tab is oriented to the side of the mill with the drive shaft.

Align the holes and install the mounting bolts with an Allen key. Tighten firmly.



Step 6: Flip the mill back over, slide the crank handle over the drive shaft and snug with a wrench.



Step 7: Finished! Put the mill onto a bucket and you are ready to mill!

CRUSHING TIPS & TRICKS FOR THE PERFECT GRIST

Speed matters

To operate, either hand-crank or use a power drill. We recommend a corded drill with 3/8" chuck minimum and low-RPM capability. Attach drill to the drive shaft and use at low speed.

Husks are key

Grains without a husk (i.e. rye and wheat) need a finer crush. Take advantage of your knobs and tighten up that gap to get the perfect crush. The goal is to crack the husk, not pulverize.

Fresh is best

This malt mill enables you to crush grains right before brewing. The freshest beer is made with freshly milled grain. Keep all un-crushed grain tightly sealed in a food safe container until the next brew day.